

**Working Pressure:  
1500 psi (103 bar) for all sizes<sup>1</sup>.**

### Description

- Housing - Duplex or Superduplex stainless steel type CE8MN (UNS # J93345) conform to ASTM A995, Grade 2A requirements. Piedmont also offers this coupling in superduplex type CE3MN (UNS # J93345) conform to ASTM A995, Grade 5A requirements for higher resistance to corrosion. Other alloys are also available; contact Piedmont for details.

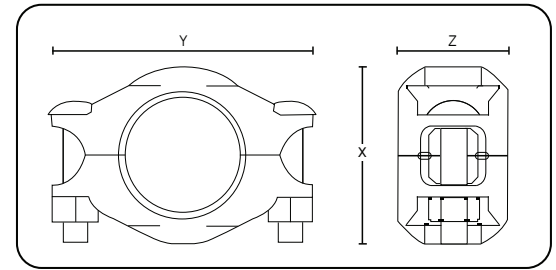
- Gaskets - EPDM rubber, suitable for hot and cold water services. Two shapes of gaskets are available: C-shaped or Flush-fit. NSF/ANSI 61 approved or equivalent for drinking water system components. *Not suitable for petroleum service.*

*\*EPDM peroxide cured gaskets available upon request (for special applications such as chloramines, etc...)*

- Bolts / Nuts / Washers - Round / hexagonal head, oval neck, 316 stainless steel bolts and heavy hex nuts specifications conforming to ASME B18.5 – 2012. For couplings sizes from ¾” to 3”, use heavy hex type 651 silicon bronze nuts, for couplings of 4” and up use 316 stainless steel nuts. Washers are heavy pattern 316 stainless steel.

### Note

*For the use of Style S couplings on cyclic axial displacement systems, please consult with Piedmont for design and installation guidance.*



Style S Specifications					
Nominal size inch	Dimensions			Approx. weight lb (kg)	Working pressure* psi (bar)
	X	Y	Z		
3/4	2.00 (50.8)	3.20 (81.3)	1.71 (43.4)	1.10 (0.50)	1500 (103)
1	2.40 (60.9)	3.50 (88.8)	1.68 (42.7)	1.16 (0.53)	1500 (103)
1-1/4	2.72 (69.1)	3.74 (95)	1.71 (43.4)	1.53 (0.69)	1500 (103)
1-1/2	3.04 (77.0)	4.17 (105.9)	1.71 (43.4)	1.60 (0.72)	1500 (103)
2	3.50 (88.9)	4.81 (122.1)	1.79 (45.5)	2.53 (1.15)	1500 (103)
2-1/2	3.92 (99.3)	5.38 (136.5)	1.85 (47.0)	3.15 (1.43)	1500 (103)
3	4.70 (119.4)	6.23 (158.0)	1.85 (47.0)	3.80 (1.72)	1500 (103)
4	5.90 (149.7)	7.40 (187.9)	2.02 (51.3)	5.86 (2.66)	1500 (103)

<sup>1</sup>Working pressures have been determined based on generally accepted standard specifications for performance of gasketed mechanical couplings, in accordance with ASTM F1476 and are applicable for schedule 40s pipes with cut grooves only. For use on pipes thinner than schedule 40s and for roll grooves, please consult with Piedmont. Pipe's schedule, working pressure and material must comply with the requirements of ASME B31.1.

