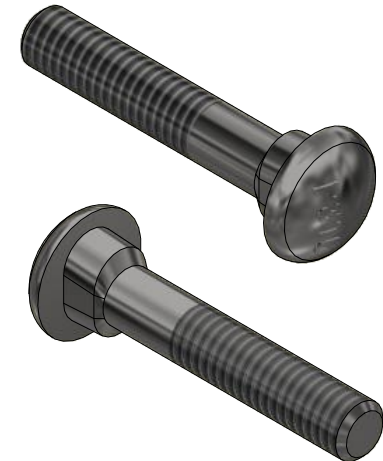
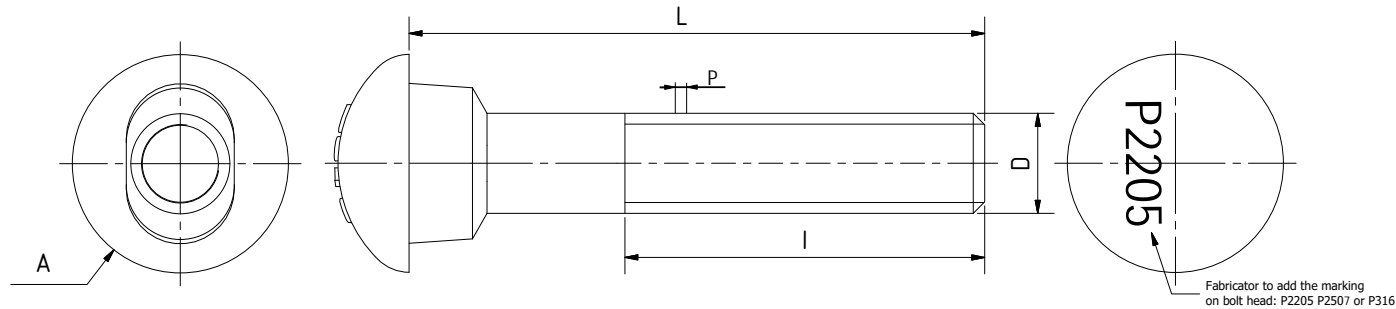


Bolt P/N	Nominal diameter over thread (D)	Head diameter (A)	Length under head (L)	Thread length min. (l)	Thread pitch	BTM bolts for Piedmont couplings:
BTM8-50	M8	15,6	50	25	1,25	F-K-P [075-100-125-150-200]
BTM10-50	M10	18,95	50	25	1,5	S-D-B [075-100-125-150]/ B 200 /F-K-P [250-300]
BTM12-65	M12	23,8	65	33	1,75	S-D [200]/H [100-125-150]
BTM12-80	M12	23,8	80	40	1,75	P 400
BTM12-105	M12	23,8	105	51	1,75	P [600-800]
BTM14-65	M14	23,85	65	33	2	D-B [250-300]
BTM14-80	M14	23,85	80	40	2	S [250-300] / F-K [400]
BTM14-110	M14	23,85	110	54	2	F-K [600]
BTM16-65	M16	30	65	33	2	H [200-250]
BTM16-85	M16	30	85	43	2	S-D-B [400]
BTM16-130	M16	30	130	64	2	F-K [800-1000-1200]
BTM20-85	M20	38	85	43	2,5	H [300-400]
BTM20-110	M20	38	110	55	2,5	D [500-600] / B [600]
BTM22-130	M22	42	130	65	2,5	D-B [800]
BTM27-170	M27	45	170	85	3	D-B [1000-1200-1400] / D [1600-1800] / F-K [1400-1600]



- Notes:**
1. Metric bolts to be fitted with the correspondent metric nuts DIN-934 (coarse thread), and metric washers DIN125 (where applicable).
 2. Remaining dimensions as per manufacturer's discretion.
 3. Materials available: SS316 , Duplex 2205, Super Duplex S32750 (ASTM A1082)
 4. Head marks: 'P316', 'P2205', 'P2507'
 5. Corrosion resistance: Duplex 2205 (PREN aprox 35; CF aprox 34), SS316 (PREN aprox 23.5; CF aprox 23), Super Duplex S32750 (PREN>40)



PROPRIETARY AND CONFIDENTIAL NOTE:
 THE INFORMATION CONTAINED IN THIS DRAWING IS THE SOLE PROPERTY OF PIEDMONT PACIFIC. ANY REPRODUCTION IN PART OR AS A WHOLE WITHOUT THE WRITTEN PERMISSION OF PIEDMONT PACIFIC IS PROHIBITED.

REV		DATE	DRAWING REVISION			
REV	DATE	REVISION DESCRIPTION	DRAWN	CHKD	ENG	APPVD
1.0	22-09-2021	TECHNICAL DRAWING	IU	AS	AS	AS



UNLESS NOTED OTHERWISE
 DO NOT SCALE PRINTS

PIEDMONT PACIFIC
 OVAL NECK TRACK BOLT

TITLE: OVAL NECK TRACK BOLT (Metric Sizes)				
SCALE: 1:1	UNIT: [mm]	REV: 1.0	DOC. N° DWG-BTM	SHEET: 1.0