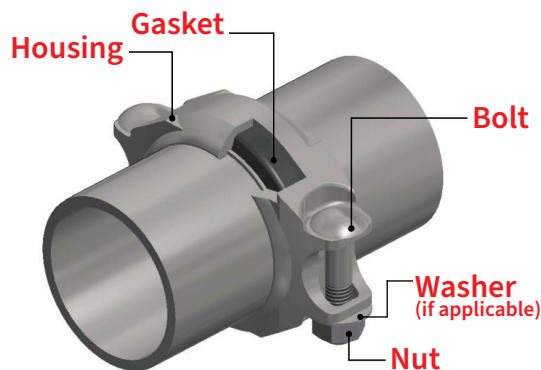


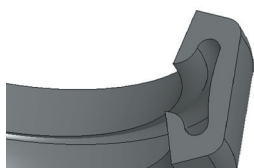
Gaskets

A complete coupling assembly consists of coupling housing pair, nuts, bolts, and gasket. The coupling housing contains and compresses the gasket, which effects proper sealing of the joint. Piedmont gaskets are designed for a tight seal in high pressure industrial applications.

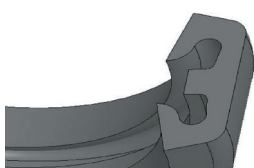
Piedmont offers two different shapes of gaskets: C-Shaped and Flush-fit. The Flush-fit type is recommended for vacuum services. The inner lip minimizes turbulence in high-velocity applications.



Coupling Assembly



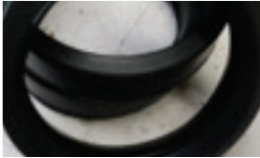

C-Shaped gasket



Flush-fit gasket

Material selection:

Piedmont offers three main rubber gasket material options to best suit the required coupling service application:

Gasket Material	Manufacturing range	Service recommendation	Temperature range	Marks
EPDM (Ethylene Propylene Diene Monomer)	0.75" - 16"	Hot water service within the temperature range, seawater, and brinewater, dilute acids, oil-free air and many chemical services. Potable water. NSF (ANSI 61) approved for potable water or equivalent FDA. Peroxide cured EPDM for chloramines service. NOT SUITABLE FOR PETROLEUM SERVICES OR STEAM SERVICES.	-20°F to 230° F (-29°C to 110° C)	No stripe 
Nitrile - NBR	0.75" - 16"	Petroleum products, hydrocarbons, air with oil vapor, vegetable and mineral oil, all within the specified temperature range. Water services under 150°F (66°C). Severe duty applications. NOT SUITABLE FOR STEAM SERVICES	-20°F to 180° F (-29°C to 82° C)	Orange stripe 
Viton® – Fluoroelastomer - FKM	0.75" - 3"	Petroleum oils, many oxidizing acids, halogenated hydrocarbons, lubricants, hydraulics fluids, organic liquids and air with hydrocarbons NOT SUITABLE FOR STEAM SERVICES	20°F to 300° F (-7°C to 149° C)	Blue stripe 